



TENNIS TO PICKLEBALL CONVERSION

AT A GLANCE

Mr. Scott's home in GA of over 50 acres is every family's dream. With amenities of all kinds – a pool, lake, football field, basketball court, tennis court – it does not fall short of places that bring everyone together. However, tennis no longer aligned with family interests. Pickleball became the dream.

"One of the biggest needs we're seeing is the conversion of tennis to pickleball."

"We took an existing tennis court and converted it into two pickleball courts."

"The beautiful thing about our court systems is that they are DIY, very simple to install."

CHALLENGES

- The family outgrew tennis and wanted to convert the court to align with current hobbies.
- Needed more than one court to play on – only had room for one tennis court.
- Developed a stronger interest in pickleball than tennis.
- Required a court system that would fit the existing location and foundation provided.

SOLUTIONS

VersaCourt is highly customizable, durable, and adaptable. With different colors and game court styles, VersaCourt is the ultimate athletic court system for a wide variety of projects.



CUSTOMIZABLE DESIGN

Navy and Emerald Pickleball Performance tiles were used to perfectly fit the old tennis court foundation. While these colors are classic court combinations, the tiles come in thirteen various color options and are fully customizable.



MODULAR BY DESIGN

VersaCourt precision locking system can be installed over any existing court to provide a new playing surface – ready for play in a few short hours.

SEE THE TRANSFORMATION TO PICKLEBALL →

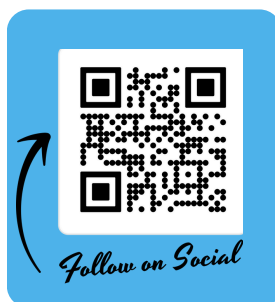
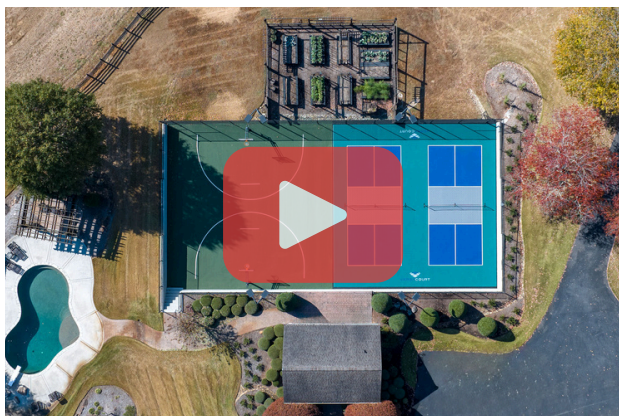


PHOTO GALLERY

