







Elite Modular Panel

At two inches in height, the Elite panel is designed to bridge unsupported distances up to 8" wide. The structural stability is perfect for use with rooftop systems or spanning between wooden joists up to 8" on center. Strength, planarity, and drainage make the Elite panel the perfect choice for an elevated installation.

	Dimensions	25.75" x 25.75" x 2" (8.3 lbs.) Usable Dims: 23" x 23" x 2" 3.61 sq. ft.
	Vertical Drainage	175 inches per hour
	Load Capacity	Exceeds 500 lbs. per sq. in
	Do It Yourself	Quick install in hours not days.
	Construction	Closed design with support ribs creating a stable foundation.
	Recyclable	Made from 100% Recycled material.
	Warranty	Limited Lifetime Warranty



Follows Terrain

The panels locking design is engineered to follow contours found on any golf course



Economical Choice

Most cost effective option compared to pouring concrete



Portable

Modular design allows panels to be moved after installation



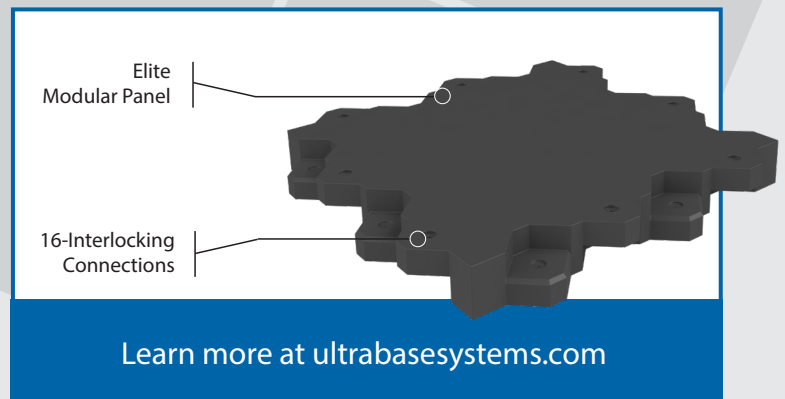
Versatility



Value



Portability



Recommended Uses:



Golf



Mini-Golf



Rooftop

Additional Facts:

Locking System	16 interlocking teeth ensure perfect alignment from panel to panel
Profile	Closed design
Installing Over Uneven Terrain	Designed to follow the contours of uneven terrain
Materials	Proprietary blend of Polypropylene and other materials

Available Colors:



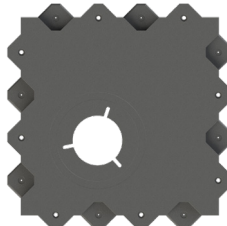
Additional Elite panel shapes:



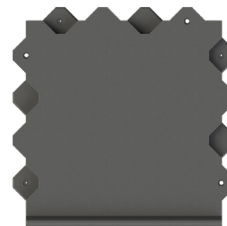
ORSCENI Panel
Single Outside Radius



ORDCENI Panel
Double Outside Radius



ICCNI Panel
Inside Cup Hole



SENI Panel
Outside Edge



IRSCENI Panel
Single Inside Radius

